

Meru University

Presents

The Power of Permaculture for Personal and Planetary Change



Class 4

April 1,
15, 22 and 29



Instructors:

Robert Beese
Ralph Raaths
David C. Lewis

Sponsoring Masters

Hierachs of the Elementals



Virgo
Pelleur



Oromasis
Diana

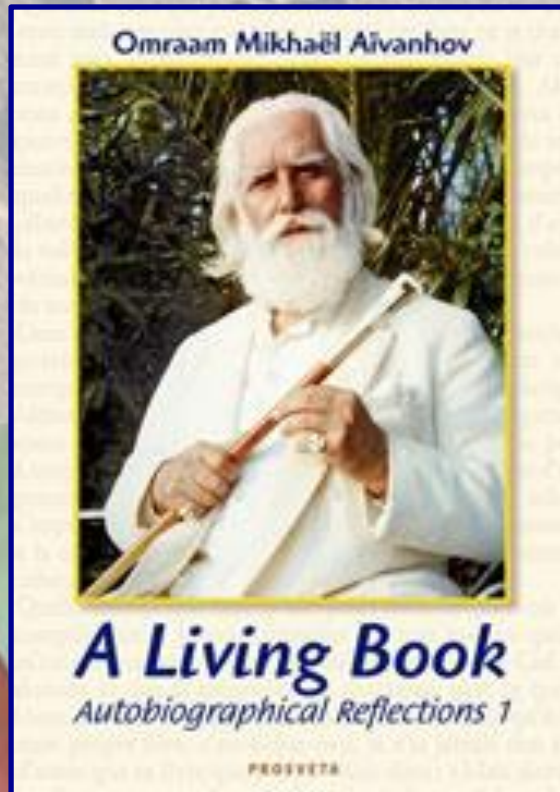


Neptune
Luara

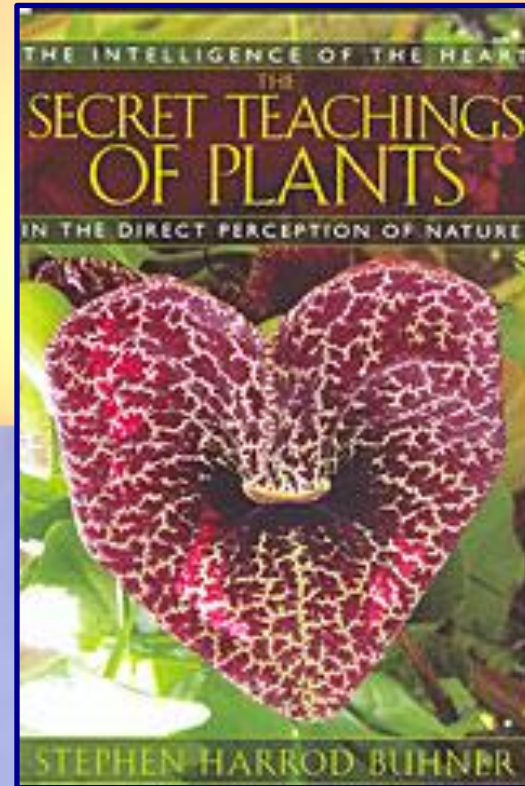


Aries
Thor

Required Reading

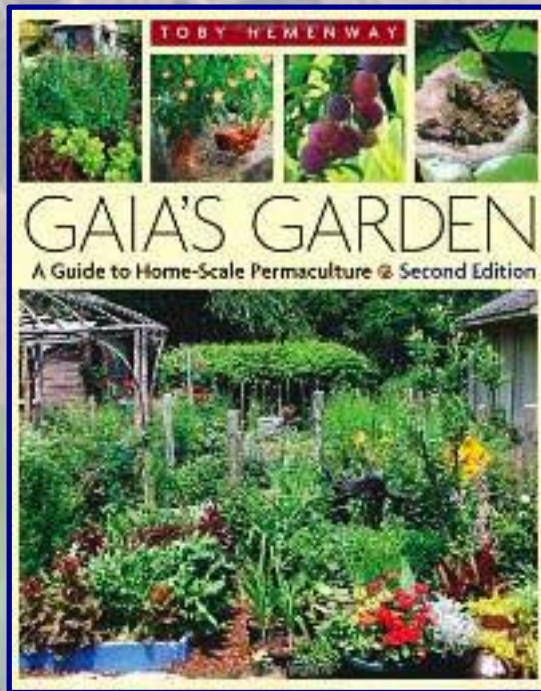


*A Living Book,
Autobiographical Reflections*
By Omraam Mikhael Aivanhov

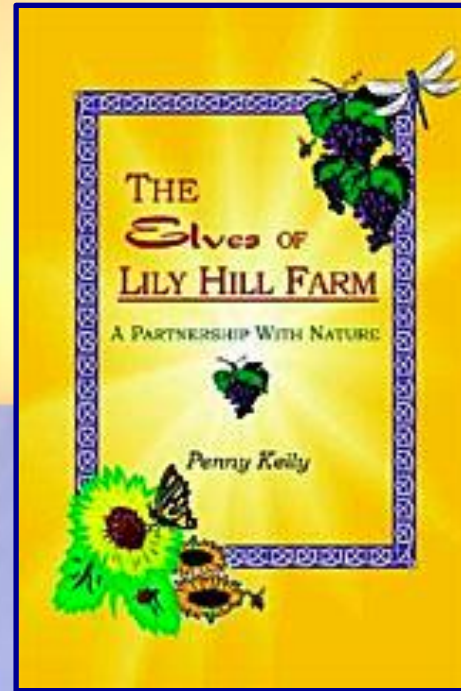


*The Secret Teachings of Plants:
The Intelligence of the Heart in the
Direct Perception of Nature*
By Stephen Harrod Buhner

Recommended Reading



Gaia's Garden:
A Guide to Home-Scale Permaculture
By Toby Hemenway



The Elves of Lily Hill Farm
By Penny Kelly

Recommended Reading



Sepp Holzer's Permaculture
By Sepp Holzer

Our Earth in its Pure Estate

As you know, in its pristine state long ago the Earth was not dense and dark but was crystalline in nature.

We ask you, blessed hearts, when you see the Earth in your mind's eye as you visualize the blessed body of the Mother Earth, that you always maintain that perfect crystal vision of this planetary home as clear, as radiant, already emanating fully its Solar essence in all quadrants of being, at all levels of consciousness.



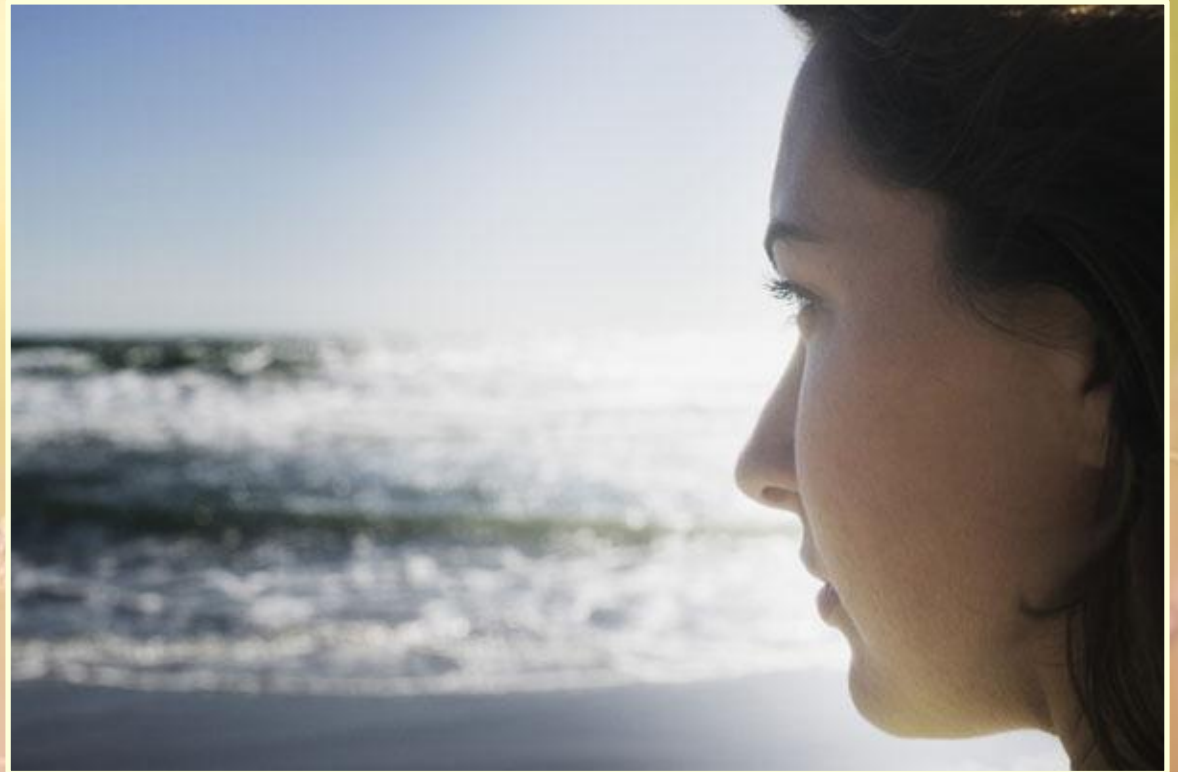
Our Earth in its Pure Estate

(Continued)



As you hold for the Earth this perfect ideal, we hold for you the same immaculate vision. And thus there is an incremental and accelerated action of the light of UR radiating throughout your being, raising you into Solar awareness. There has been a compression through the densification of the spirit in mater through a lack of awareness that has caused what you see as the earth to manifest, not in all of its pristine glory, but in the earth earthy that you know. —Pelleur, May 14, 2008

Be a Magnet for the Light



The Importance of Rigorous Self-Examination and the Necessity for Moral Development

—Buhner, *The Secret Teachings of Plants*, p. 226

Heart Connections

Where you center your consciousness will determine how you perceive the environment around you. If you are centered in your heart in congruency with your brain, you will be able to enter more fully into the world of Nature. If you are only in your brain, you will perceive the natural world only superficially.



The Reflecting Pool



You understand your heart-field so well that you perceive it like the still surface of a pond. Any image that strikes it is allowed to pass directly within you, to be held within you, to take a shape with which you do not interfere.

—Buhner, *The Secret Teachings of Plants*, p. 232

Healthy Self Observation



Thus, because you are so deeply perceiving meanings as a participatory consciousness, the process calls for a commitment to rigorous self-examination. You trust your senses, your hearts' ability to perceive in this way, and yet simultaneously keep a healthy skepticism of your internal response to the mode of representation. The key word here is *response*.

—Buhner, *The Secret Teachings of Plants*, p. 233

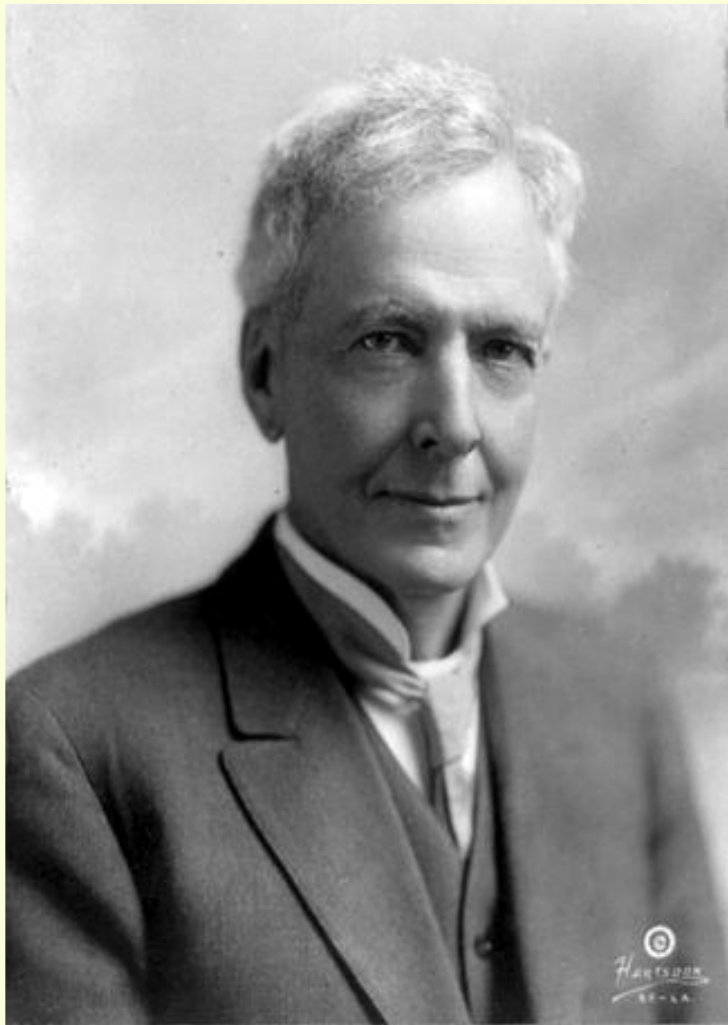
Transparent Eyeball



To see clearly we must “become a transparent eyeball”

—Buhner, *The Secret Teachings of Plants*, p. 235

Nature Exalts What is Real



I have seen myself lose intolerance, narrowness, bigotry, complacency, pride, and a whole bushel-basket of other intellectual vices through my contact with nature.

—Luther Burbank, *The Secret Teachings of Plants*, p. 243

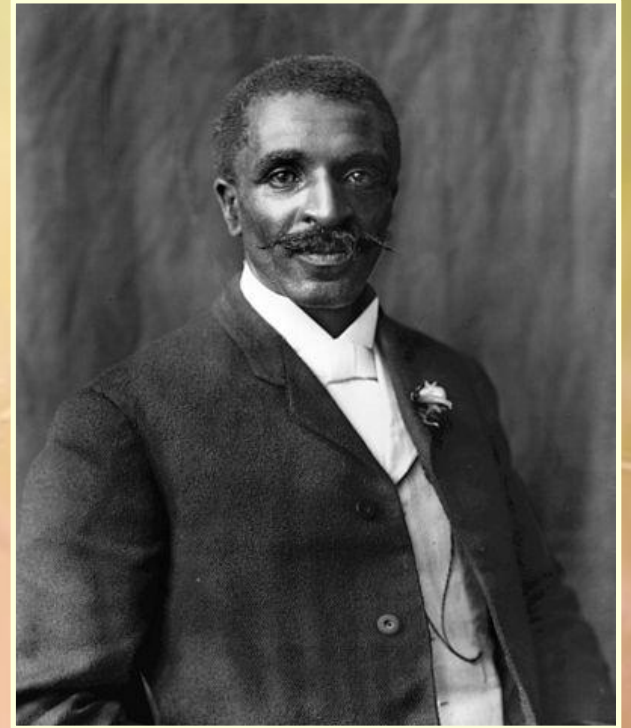
Luther Burbank (1849 – 1926)

God is Everywhere

As soon as you begin to read the great and loving God out of all forms of existence He has created, both animate and inanimate, then you will be able to converse with Him, anywhere, everywhere, and at all times.

Oh, what a fullness of joy will come to you.

—George Washington Carver,
The Secret Teachings of Plants, p. 254



George Washington Carver
(1864 – 1943)

Inviting all Gnomes

Have you named your gnomes? Even as Snow White knew them, some of you have many that follow and trail you as you travel and walk upon the earth.

But you have not always recognized their activity, their love for you and their requests for calls and prayers. If you would have seven gnomes with you on your walks in nature, then name them; invite them, along with the chohans, to do their works of beauty, to fulfill assignments that you give them. So they will revel in the light of your aura, even as they attempt to fulfill their reason for being—to sustain harmony and balance and love in the earth. We trust that you will not name them Grumpy or Sleepy or Dopey but names that befit their office as servitors of the Mother Earth.

—Pelleur, May 14, 2008

Maintaining our Physical Bodies

May we suggest that you place as much importance on your physical health as you do on the other three quadrants of being, beloved?

And so, equal time must be given to the maintenance of your wholeness, your balance and the positive positioning of your being in the concrete world in which you live.

If you spend your time primarily in the mental plane of thought or in your emotional feeling world or in musing on the past of your memory body, you cannot fully integrate into the cosmic awareness of your three higher bodies, for the base of the pyramid of self will be askew, thus causing the apex to also be out of alignment.

Our Personal Trainer

(Virgo, Continued)



The energization that you feel when you exercise and take in fresh air and prana prove that you can increase the flow of light through your being when you are physically fit, beloved.

Our Personal Trainer

(Virgo, Continued)

So, by the full authority of all the hierarchs of the elemental kingdom, I announce that those who will be faithful to and show

mercy upon their physical bodies by being diligent in the pursuit of physical fitness will receive my tangible assistance through the aid and care of a special gnome who is like a personal trainer who will work with you and work on you to keep you in shape!

So you can now call to this personal trainer gnome to help you, dear hearts! —Virgo, April 5, 2005



Reports on Class 4 Assignments

- Chapters 13 - 14 and epilogue (pp. 226 - 287) in *The Secret Teachings of Plants*.
- Share about one or more exercises from the Appendix (Buhner, 2004) and your experience(s) on the Forum. Please note that Exercise 3 is similar to our Week 1 assignment. For a deeper experience, you may choose to combine Exercise 4 and Exercise 10, bringing your inner child along with you on a journey into nature's realm.



Elementals Labour of Love



Earth
Water
Air
Fire

Elementals Labour of Love

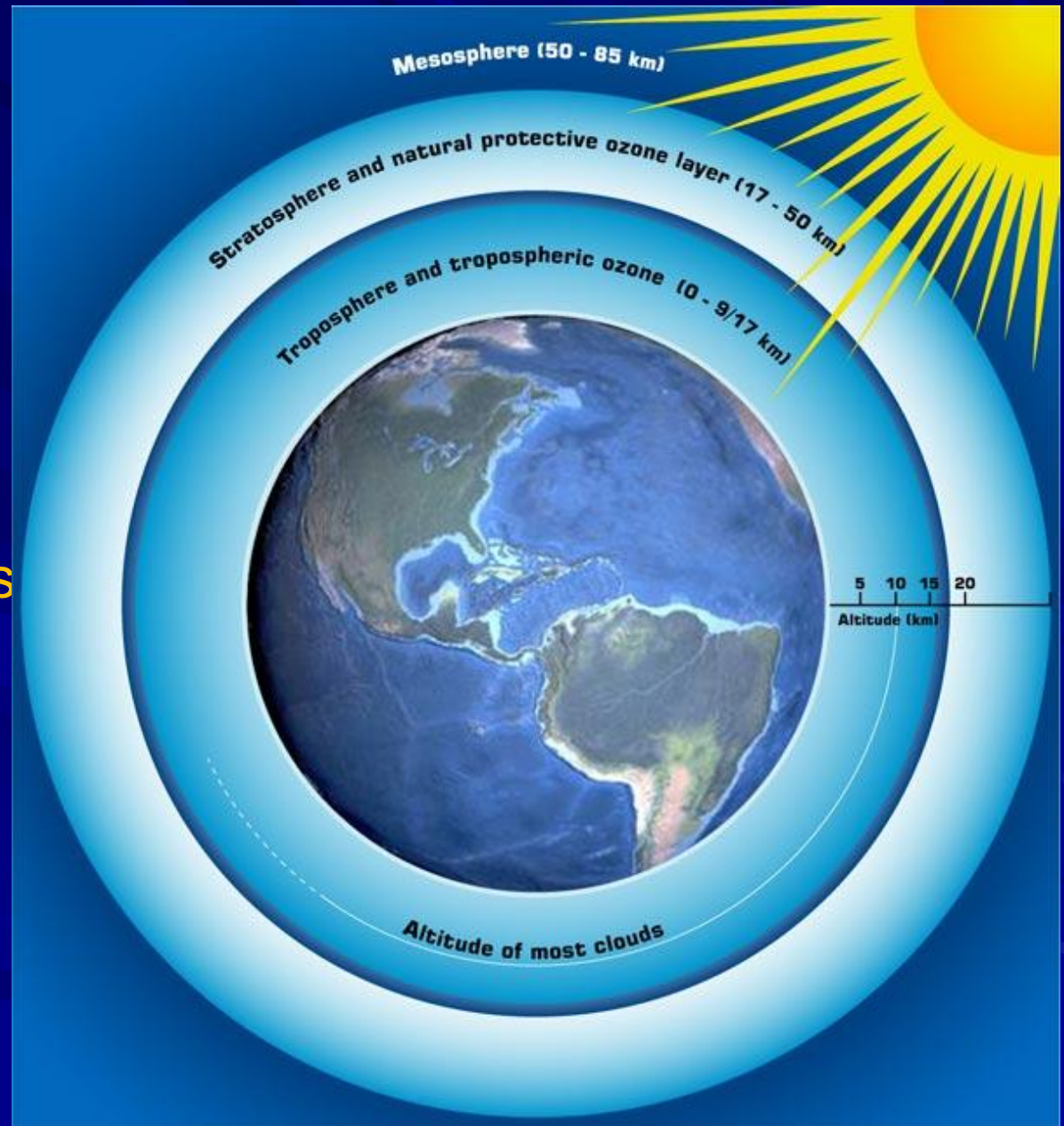
The Earth atmosphere is the domain of the Etheric mantle. There are four such envelopes in the mantle. Each a working arena for different elementals.

Warmth Ether

Light Ether

Sound Ether

Life Ether



Elementals Labour of Love

Salamanders work the Warmth Ethers, within the warm and dry processes of the Earth.

Salamanders are direct offspring and emissaries of the Elohim (form spirits). They are the source of the warmth and light that are imparted to the Undines, Sylphs and Gnomes. They form seeds from within the Warmth Ether and are able to receive the archetypal plant forms from the Saturn and Venus spheres and build them into earthly forms.

Earth
Water
Air
Fire

Elementals Labour of Love

Sylphs work the Light Ethers,
within the warm and moist
processes of the Earth .

Sylphs work like Angels in
the Etheric mantle of the
earth they receive and carry
light from the salamanders
just as the Angels receive
and hold the light for
individuals so they weave
light into the flowering plant.
They are able to receive into
the light Ether of the earth
the archetypal plant forms
from the Jupiter and
Mercury spheres and reflect
them into earthly forms.

Earth
Water
Air
Fire

Elementals Labour of Love

Undines work the Sound
Ethers, within the cold and
moist processes of the Earth

Undines work like Archangels in the
Etheric mantle of the earth. Just as
Archangels work within the genius of
language, so they carry light from the
Salamanders into the sound ether and
build the leaves of the plant form. They are
able to receive into the sound Ether of the
earth the archetypal plant forms from the
Mars and Moon spheres and reflect them
into earthly form.

Earth
Water
Air
Fire

Elementals Labour of Love

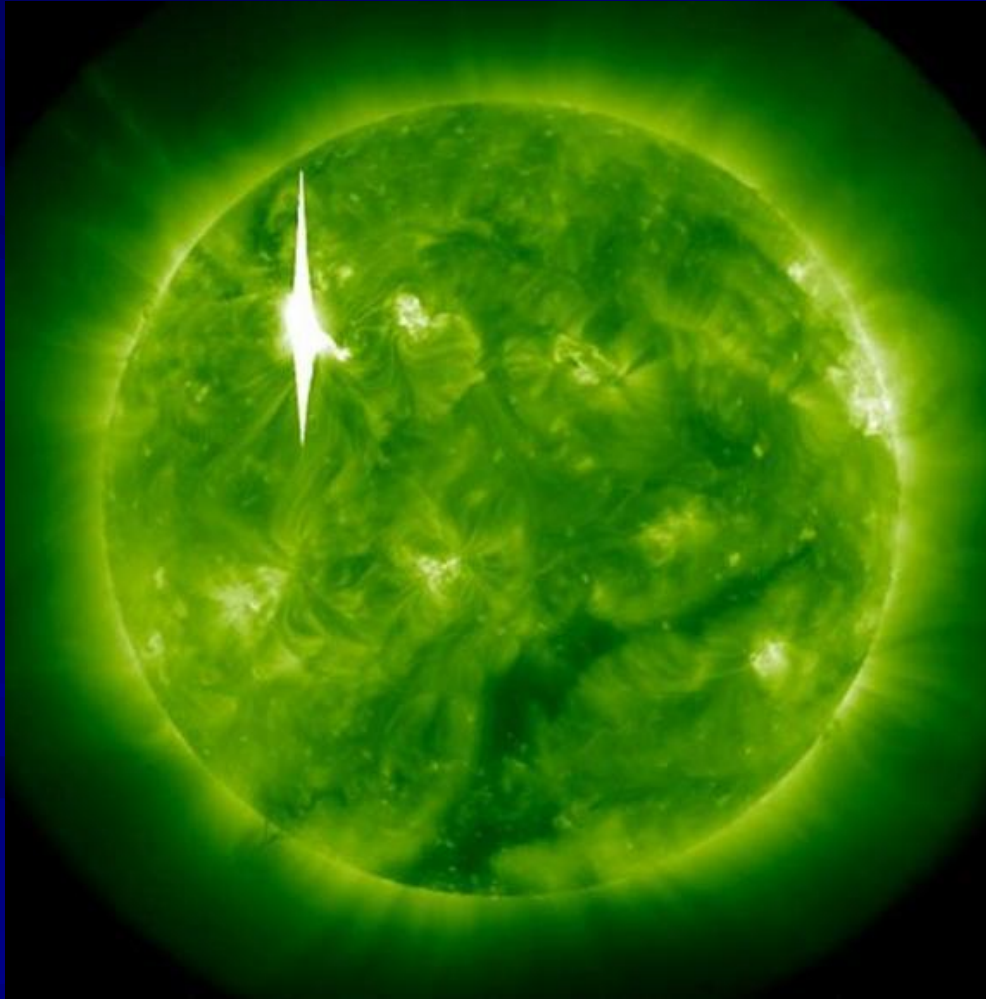
Gnomes work the Life Ethers,
within the cold and dry
processes of the Earth.

Gnomes work like the Archeia in the
Ethereic mantle of the earth. The Archeia
bring light into the sequence of time, just
as the Gnomes bring about the sequence
of plant form in root and stem. They are
able to receive into the Life Ether sphere
the impulse for life from Sun.

Earth
Water
Air
Fire

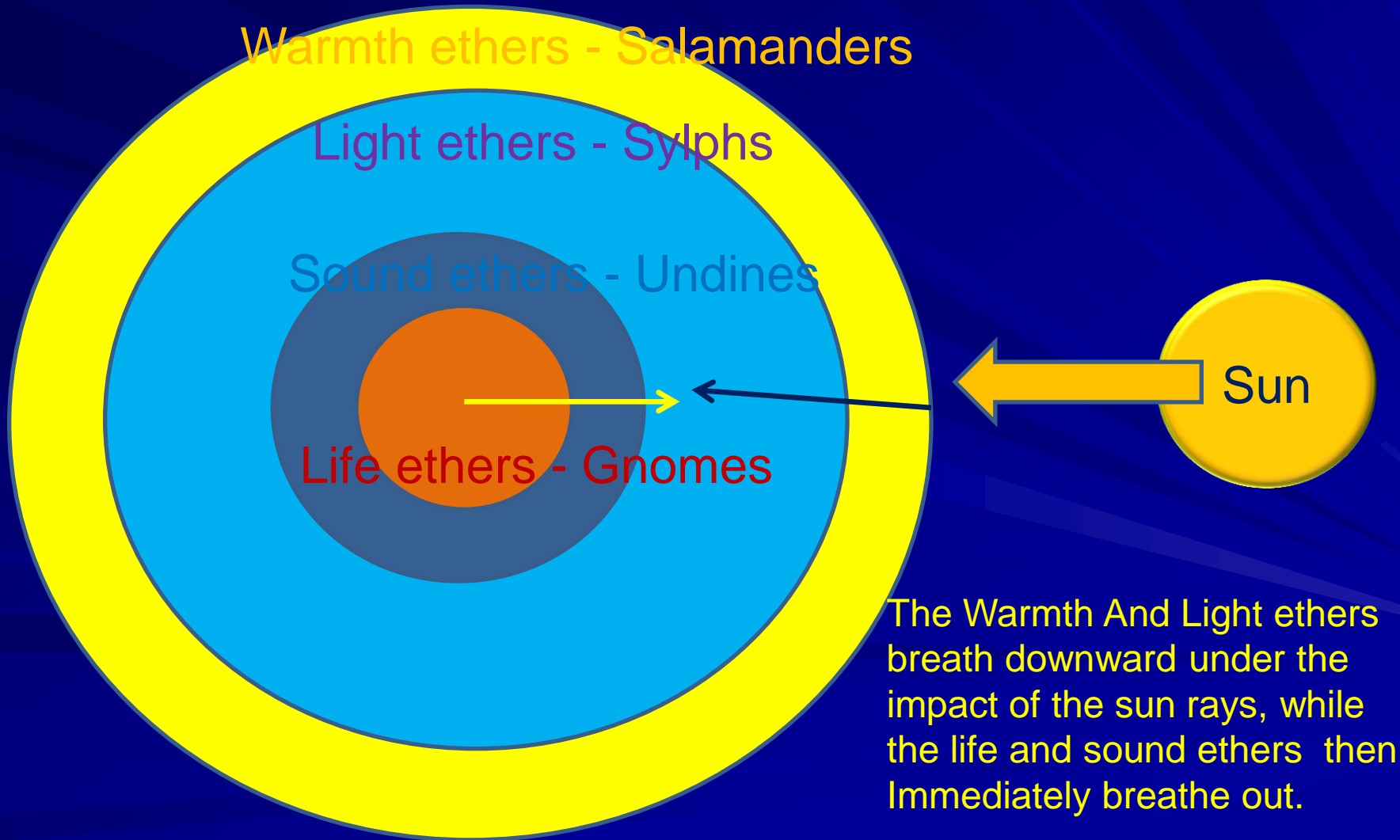
Elementals Labour of Love

The source of pure Life
Ethers is The Sun which
Gnomes fashion into form.



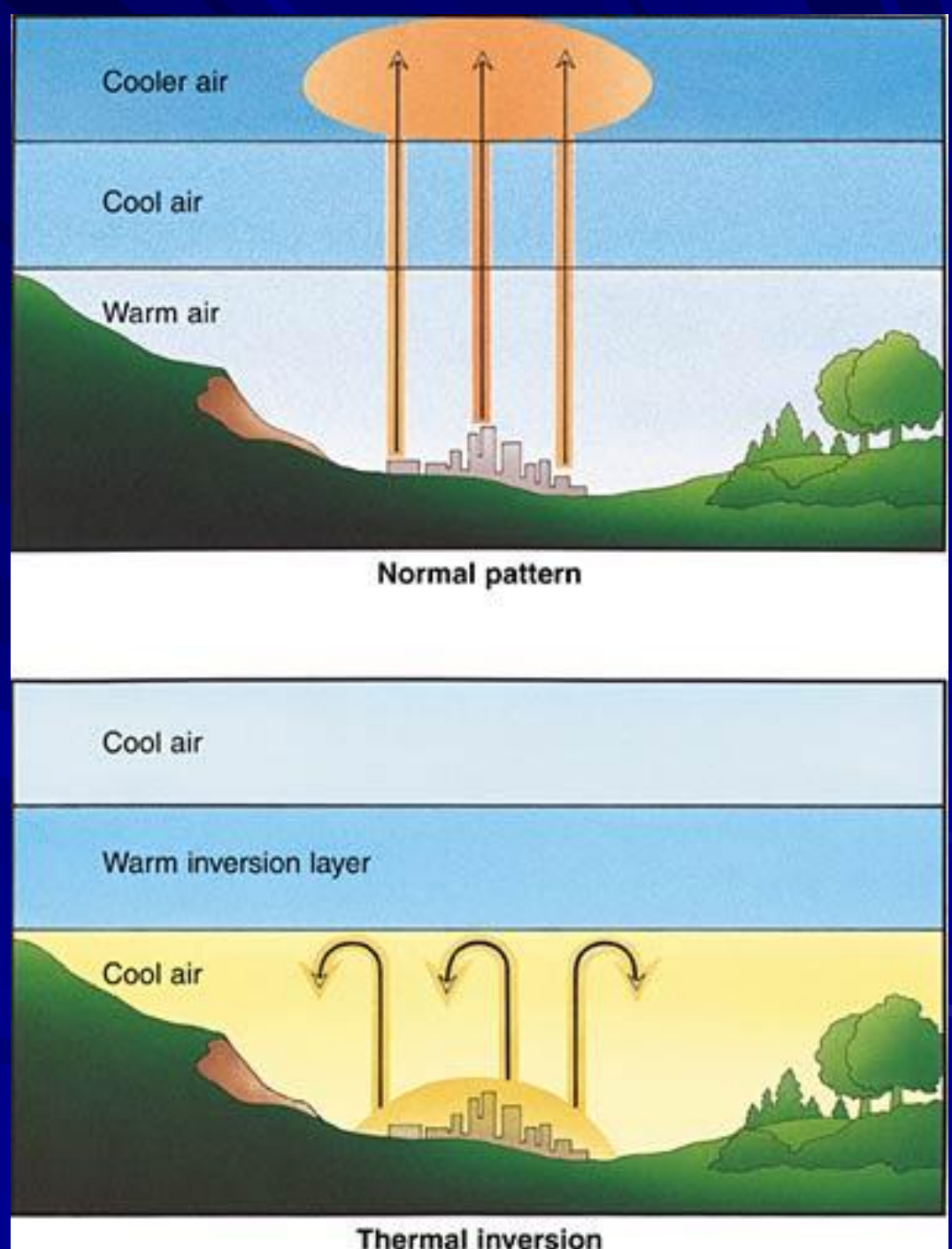
Earth
Water
Air
Fire

The Ether Mantle of the Earth



Elementals Labour of Love

Thermal temperature inversions show clearly the alteration of direction within the breathing process of the Etheric mantle. The Ether sphere reversal takes place at about 3 in the morning and afternoon.



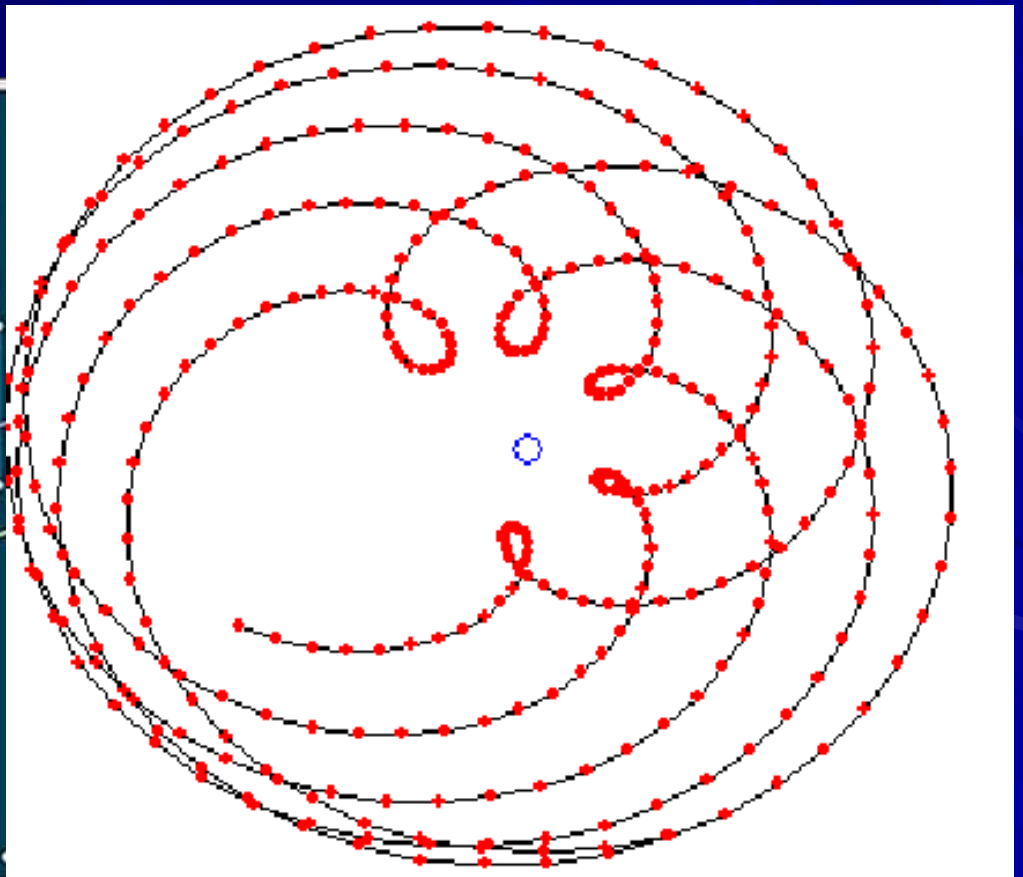
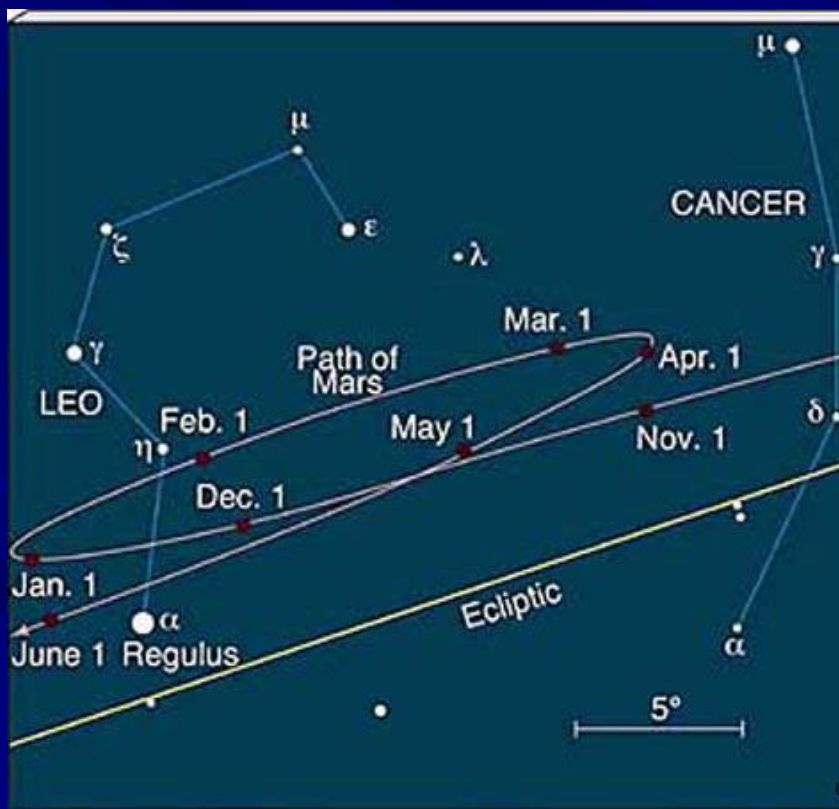
Elementals Labour of Love



Temperature
Inversion

Elementals Labour of Love

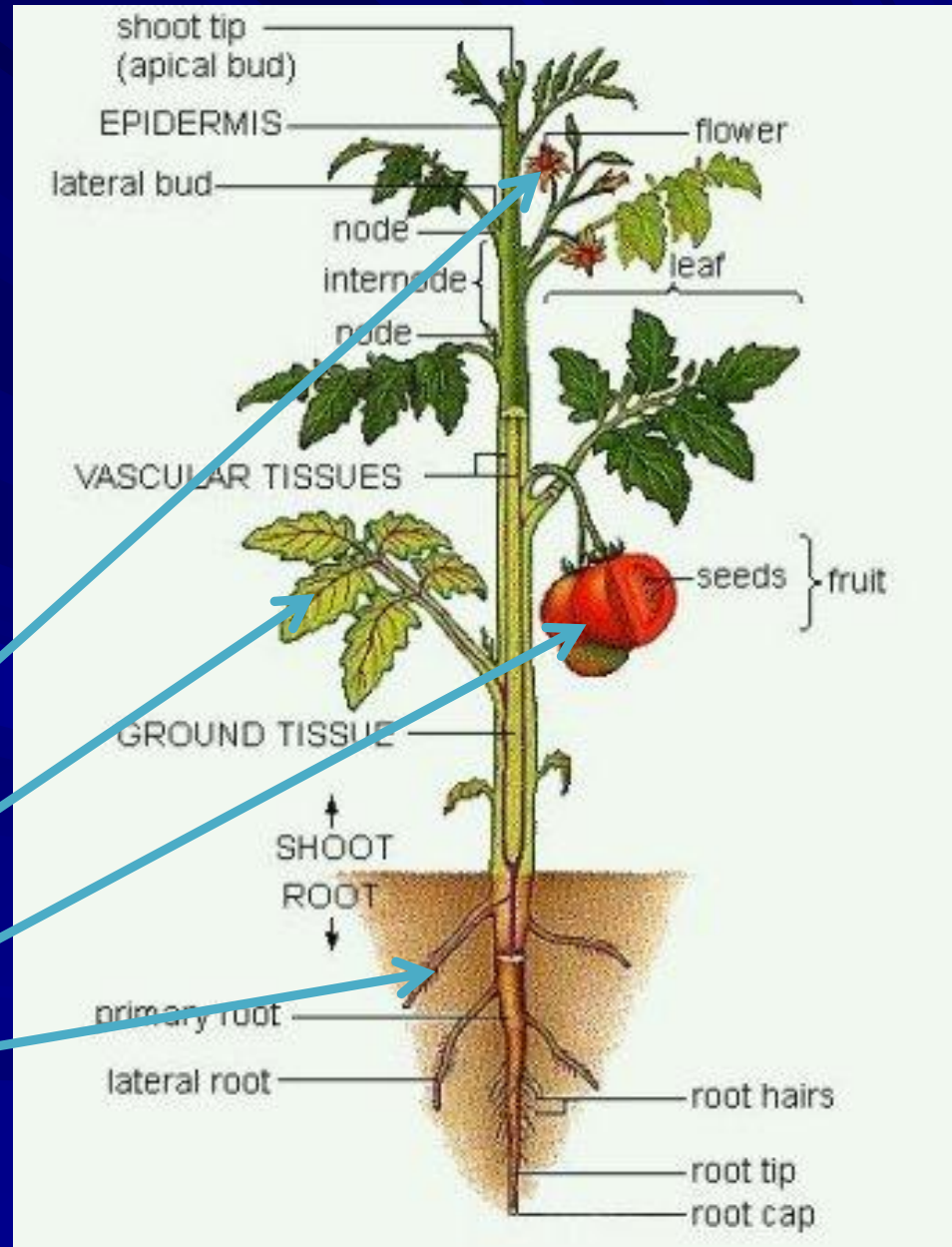
The planetary Ether spheres
breath in and out of form –
they hold the form image on
the inner Ether sphere and
pour it into form in a cyclic
activity each year



Elementals Labour of Love

The Elementals get involved in different stages of the plant development

Flower - Sylphs
Leaves - Undines
Seed - Salamanders
Root - Gnomes



Earth
Water
Air
Fire

Elementals Labour of Love

The Elementals get involved in different stages of the plant development

Root - Gnomes,
Leaves - Undines,
Flower - Sylphs and
Seed - Salamanders.

Biodynamic Plant Division

All plants can be divided into four groups, each related to one of the four elements Earth, Water, Air and Fire.

Earth = Root Plants

Asparagus, Beets, Carrots, Garlic, Horseradish, Jerusalem Artichoke, Leek, Mushroom, Onion, Parsnip, Potato, Radish, Spring Onion, swede, Turnip.

Water = Leaf Plants

Basil, Bay, Brussel Sprouts, Cabbage, Celery, Chicory, Coriander, Cress, Fennel, Kale, Lettuce, Mint, Mustard and Cress, Parsley, Rhubarb, Sage, Sorrel, Spinach, Time.

Air = Flowering Plants

Artichoke, Borage, Cauliflower, Elderflower and all Flowering Plants

Fire = Fruit-Seed Plants

Apple, Apricot, Asparagus Pea, Aubergine, Blackberry, Broadbean, Bush Bean, Cherry, Cucumber, Fig, French Bean, Gooseberry, Marrow, Nectarine, Pea, Pear, Plum, Pumpkin, Runner Bean, Sweetcorn, Tomato, Vine

Discover the Gnomes' World of Joy, Light and Love

Express Gratitude for Everything in Your World
and Develop the Green Thumb
of the True Nature Initiate!



Virgo and Pelleur

April 17, 2012

Dearest Ones,

From within you will find the courage and the resources to know the Earth Mother, whose loving expression and tender care flow through your body temple to allow it to coexist with the body of the entire Earth itself in resonance, in harmony and in love.



© Elemental Alchemy
by Gaelyn Larrick
www.artservingspirit.com

1203





We provide the framework for your physical existence through the elements that Spirit has deposited in matter through the intelligence processes of life.

The Father creates in a most loving way and the Mother receives that love so that life-forms may come into being. She provides the matrix—the material substance in the triune, or 3-D, world—for her children to be born, to grow and to learn.



What you have learned in life in some way began through your interchange with your mother and what she invested within you of her own natal joy, creativity and effulgence.

When you glean the internal aspects of your own truth through a conscious cooperation with your own Mother Light, then your true nature, your Buddha nature, unfolds and you experience the regenerative processes that result in your own enlightenment and eternal freedom.

The precious gnomes experience physical reality through what we call gnome gnosis, which is none other than a very spiritual practicality based on what works, dear ones. Yes, they are fully involved in the affairs of life because they understand the processes upon which life is built—the foundation of being, the fundamentals of existence, the protocols of perfection through a higher type of natural selection and spiritual evolution.



You see, the earth elementals are very selective in the whos, whats, wheres, whens, hows and whys of life. They are nuts-and-bolts types of guys and gals who can make things work through getting the God-genes within you in action through divine alchemy, which is beyond trial and error! They will inspire you because they know the formulas that result in a victorious result in each and every case.

© Svetlana Toukova
www.sacredword.org



Within the gnome world, beyond your physical vision, there are special laboratories where our special scientists have calculated exactly what is required by your own body elementals to have optimal health and vitality as well as spiritual wealth and virility. They long ago learned how to perfume the cosmos with the roseate essences of true love, for they invest their love in so many ways within the soil, rocks, plants, bushes and trees in your gardens, in your arbors and in the natural world all around you.



The gnomes are smart and will teach you special techniques for the best production within your permaculture world, helping you plan to perfection and grow to radiant fruition all that you plant and lovingly cultivate.





Some of you have heard that music played outside can benefit your plants, and this is true. In addition to the wonderful classical, baroque and Celtic music that the gnomes love so much, they also delight in your singing your own songs of love to them, to the plants and to the sun, dear ones!



They work with the other nature spirits and the invisible powers of God through the Holy Spirit to spiritually extract from your hearts' music the light-essentials that can quicken and accelerate the growth of all flora.

They amplify the light through their own happy nature to revitalize all with a special glow of joy and love. And we, as their hierarchs, their teachers and mentors, also illumine your world with the radiance of our light and beauty.



When you are grateful to God and express gratitude for everything in your world, your consciousness is raised and you develop the green thumb of the true nature initiate!

The key element in having that emerald digit upon your hand is a loving heart that feels the flow of light and extends that joy in conscious acts of spirit within matter. In this way you become a blessing and a boon to all! In this way you take part in the grand adventure of life itself and help the Earth Mother to balance all in her manifold domains of life.

The gnomes always maintain a positive attitude and are expressive of the highest outcomes in every scenario and in every season.

They urge you to be positive and see clearly your goals and then to make them happen through getting

wrapped up in the sacred work that only you may invest in your outdoor love life with nature.

Every minute that you spend outside in the sun allows you to receive a triple portion of the spiritual energy and solar radiation required for your journey into infinity.

And every conscious moment you spend with the gnomes and with all the elementals moves you gracefully into a new aspect of your own new-world experience of life and love!



Make the most of your time in nature by first breathing deeply and then speaking lovingly to the spirits all about you as if they were your dearest friends.

The more you do this, the more they will befriend you. And one day you, too, may begin to hear their “heigh-hos” and “tee-hees,” as they offer their earth mojo for many victories!





We trust you've had fun learning more during this four-week course that will help you be ever more joyful and spiritual, more reflective and radiant, more bountiful and beautiful in all your sacred work.

We support all those who revere life and who are reverent within nature, knowing that we are active in your world and that we delight in those who respect our lives, too.

For your spiritual success in all your virtuous endeavors, we remain,

Virgo and Pelleur



Thank You!



Virgo and Pelleur

Thanks to:



Robert Beese

Ralph Raaths

David Christopher Lewis

MU Staff

HeArt Expressions

HC Creative Arts Team

Gaelyn Larrick

(www.artservingspirit.com)

Svetlana Toukova

(www.sacredword.org)



Complete a Survey

The Holy Kumaras on Venusian Alchemy, Architecture, Art and Music



May 18, 2012

One-Day Seminar



An Approach to Rudolf Steiner's Biodynamics—*The Rejuvenation of Damaged Soil*

Instructors:

Sponsoring Masters:
Saint Germain
and Kuthumi

David C Lewis

Angus McIntosh

Ralph Raaths

July 22, 29, Aug 5, 19



Self Transformation through

DIVINE MAGIC



Aug. 26
Sept. 2, 9, 16

Copyright © 2012

Meru University®
The Hearts Center®

www.heartscenter.org

